

RIDE FLASHCARDS

Guest Notice

Guests must review ride requirements before joining the queue. If you have a physical impairment, assess the ride for risks.

In emergencies, specialist equipment may be needed, causing delays. For assistance, speak with the Ride Attendant or Accessibility Team. Unless otherwise stated, guests must be able to transfer into and out of ride vehicles independently or with a carer's help. Select rides require seat belts and restraints.

For more information, ask a team member or use the contact information below. Assistance with lifts or stair lifts is available. Certain rides may be physically demanding, and admission may be refused if there's a health risk.



Hill Train

The Beginning

Queue Access: Ground level
Ride Transfer: Ground level

Step Free Ride Access

Ride Access Pass and wheelchair access at both stations are available through the exit, which provides step-free entry. The Hill Train is a funicular railway with two trains that alternate between stations each cycle. Each train consists of three carriages with either single or double rows of benches facing each other. Guests must transfer into the carriage, with or without assistance from a guardian or carer, while the train is stationary.

Please note that there is a small gap between the platform and the train. The middle carriage is wheelchair accessible, allowing wheelchair users to remain in their chair for the duration of the journey. A ramp is available to assist with boarding. One person may accompany the wheelchair user in that row, while all other guests must sit in separate rows. There are no restraints on this ride. Guests are secured by a locked door at the end of each row. The ride has no additional sensory elements. Upon arrival at the second station, the train will come to a complete stop and the doors will unlock. Guests will then exit at the platform exit gate which the ride attendant will open. After other guests have exited, a ramp will be provided for wheelchair users to disembark safely. The Hill Train operates as a one-way journey, and all guests must leave the train at the end of each cycle.



Restrictions

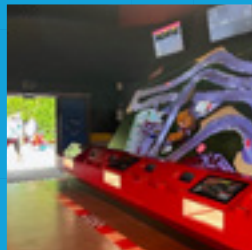
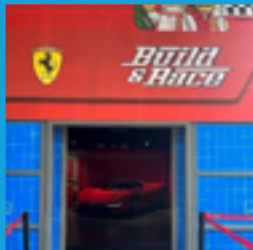
- Guests under the height of 1.3m must be accompanied by a responsible person at least 16 years of age
- Shirts and shoes must be worn at all times
- Guests are required to sit upright with or without the assistance of a guardian or carer
- Guests must be able to transfer in and out of the ride unit either on their own or with the assistance of their carer
- No standing at anytime
- No eating, drinking or smoking
- There is no minimum height restriction

Step Free Ride Access

Entrance is through the double doors beneath the Build and Race sign, with possible short wait times. The Ride Access Pass does not apply, but the attraction is step free, and mobility aids are welcome in the queue and throughout. In the garage area, guests can interact with a LEGO® Ferrari Daytona SP3 by controlling the headlights, hazard lights, and engine sounds using a screen positioned at a wheelchair-friendly height.

In the main build area, guests can build and race mini cars on accessible tables and tracks, including the Top Speed track, which displays each car's speed, and the Stunt Ramp, which has four steps and no step-free alternative. The DUPLO® Play Pit provides a space for younger guests to build and play. The Engine Block Ramp includes a small step with side access for mobility aid users. Guests can take a photo in front of the LEGOLAND® Ferrari checkerboard, which is step free, and race their creations on a digital racetrack at a wheelchair-friendly height.

Ramps are clearly marked for visibility, and sensory elements such as noise, flashing lights, and music are present. To exit, guests should use the automated double doors located to the left of the digital racetrack.



Restrictions

- No eating, drinking or smoking
- There is no minimum height restriction

Step Free Ride Access

Splash Safari is a queue-free water play area where families can cool off and explore. Featuring colourful DUPLO® themed animal models, including elephants, giraffes, lions and zebras, the attraction offers a variety of interactive water features, gentle sprays and playful fountains designed especially for younger guests. This attraction is fully accessible and allows wheelchair use throughout.



Restrictions

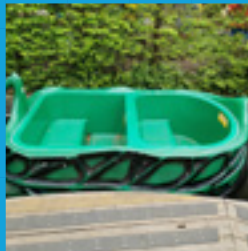
- No eating, drinking or smoking
- No flotation devices, umbrellas, cameras or loose items
- No running
- Do not drink the water
- No climbing on animals or features
- Swimwear must be worn at all times
- A responsible person at least 16 years of age must supervise children under 6 years old, an adult can supervise up to four children
- Only swimming nappies are permitted
- During extreme weather conditions such as thunder, lightning, and high winds, the attraction may be closed

Step Free Ride Access

Ride Access Pass and wheelchair access are available through the Fastrack entrance, located closest to Hopsy's Hideaway. Please enter this queue line and follow it until the merge point, where you will join the main queue line for the ride. Access to the ride is via a slow-moving turntable, which can be stopped if needed. The ride units are boats with two rows and can accommodate up to four people.

Guests will need to transfer into the ride unit, with or without assistance, as the unit is positioned at a lower level than the turntable. Please note that there is a gap between the turntable and the ride unit. Wheelchairs and mobility aids can be taken onto the turntable and parked next to the boat. After transferring, the wheelchair or mobility aid must be moved to a suitable location for the duration of the ride cycle. There are no restraints on Fairy Tale Brook.

Please be aware that the ride includes flashing and strobe lighting, and guests may get wet. The exit is at the same turntable used for boarding. Wheelchairs or mobility aids can be retrieved by either a carer or a member of staff. The transfer and exit point is at a higher level than the turntable, and from there, the exit route from the ride is step free.



Restrictions

- No standing at anytime
- No umbrellas, cameras or loose items
- No eating, drinking or smoking
- No children on laps
- Maximum of four guests per boat
- Guests are required to sit upright with or without the assistance of a guardian or carer
- Guests must be able to transfer in and out of the ride unit either on their own or with the assistance of their carer
- Shirts and shoes must be worn at all times
- Guests under the height of 1.3m must be accompanied by a responsible person at least 16 years of age

Step Free Ride Access

Ride Access Pass and wheelchair access are available through the Fastrack entrance, located to the left-hand side of the main entrance for DUPLO® Valley Airport. Access is step free up to the ride unit. The ride units are helicopters with bench seating. Guests must use two steps to transfer into the ride unit, with or without assistance from a guardian or carer.

Wheelchair users or guests with mobility aids may bring their devices into the ride area next to the ride unit. These devices must be moved to a suitable position away from the ride unit during the ride cycle. Guests are secured by a single lap bar, which locks in one fixed position.

There are no additional sensory elements on the ride. However, each helicopter has two interactive joysticks that allow guests to control the height and rotation of the helicopter. The helicopters do not rise automatically.

The exit is located to the left of the operator booth and provides step-free access.



• Restrictions

- No standing at anytime
- No umbrellas, cameras or loose items
- No eating, drinking or smoking
- No children on laps
- Shirts and shoes must be worn at all times
- Guests under the height of 1.3m must be accompanied by a responsible person at least 16 years of age
- Guests must be a minimum height of 90cm to ride
- Each helicopter accommodates two guests
- Guests must be able to transfer in and out of the

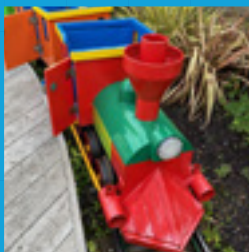
ride unit either on their own or with the assistance of their carer

- Guests are required to sit upright with or without the assistance of a guardian or carer
- Each helicopter accommodates a maximum of two guests with a maximum one adult.

Step Free Ride Access

Ride Access Pass and wheelchair access are available via the exit of the ride, located to the left of the main entrance at the top of a short ramp. Access is step free up to the ride unit. The DUPLO® Express consists of four standard carriages, each holding up to four guests seated on two benches facing each other. An additional front carriage holds two guests seated facing forward.

Guests will need to transfer into the ride unit, with or without assistance from a guardian or carer. Boarding involves a small step into the carriage. Wheelchairs and mobility aids can be brought next to the carriage for transfer and must then be moved to a suitable location for storage during the ride cycle. There are no restraints on this ride. Guests are secured by a locked door at the end of each row, and there are no additional sensory elements. Once the ride ends, the doors will unlock, and guests will exit the same way they entered. Wheelchairs and mobility aids can then be retrieved to assist guests with transferring out of the ride unit. The exit is step free. Wheelchairs and mobility aids can be brought next to the carriage for transfer and must then be moved to a suitable location on the platform for storage during the ride cycle.



• Restrictions

- No standing at anytime
- No umbrellas, cameras or loose items
- No eating, drinking or smoking
- No children on laps
- Shirts and shoes must be worn at all times
- Guests under the height of 90cm must be accompanied by a responsible person at least 16 years of age
- Each car accommodates up to four guests
- The front car accommodates two guests, only children are permitted to sit here
- Guests must be able to transfer in and out of the ride unit either on their own or with the assistance of their carer
- Guests are required to sit upright with or without the assistance of a guardian or carer
- There is no minimum height restriction

DUPLO® Dino Coaster

DUPLO Valley

Queue Access: Stairs
Ride Transfer: Ground level

Step Free Ride Access

Ride Access Pass users enter via the Fastrack entrance, which is the left-hand queue line. Guests must use twelve stairs to access the platform. There is no step-free access; however, staff can arrange a stair climber to assist guests, with transfers supported by a guardian or carer. A trained member of staff operates the stair climber, and wheelchairs should be left in a suitable location during the ride.

The DUPLO® Dino Coaster consists of one train with five rows. Guests transfer into the train over a small step from the left-hand side, with or without assistance. They are secured by individual lap bars, which are manually lowered and locked before departure. There are no additional sensory elements.

At the end of the ride, lap bars are unlocked, and guests exit to the right hand side of the platform. The exit involves ten steps, but staff will assist guests using the stair climber before reuniting them with their mobility aid.



Restrictions

- No standing at anytime
- No umbrellas, cameras or loose items
- No eating, drinking or smoking
- No children on laps
- Shirts and shoes must be worn at all times
- Guests under the height of 1.3m must be accompanied by a responsible person at least 16 years of age
- Guests must be a minimum height of 90cm to ride
- Each train accommodates a maximum of five adults
- Guests must be able to transfer in and out of the ride unit either on their own or with the assistance of their carer
- Guests are required to sit upright with or without the assistance of a guardian or carer
- Guests are required to hold on to handles/handrails, lap bars and brace against ride forces
- This ride is not recommended for guests with; back & neck problems, heart conditions, high blood pressure, broken limbs or pregnant guests

Step Free Ride Access

The entrance and exit to this attraction are step-free. Drench Towers features a water play structure with steps, water slides, and narrow walkways. At the centre of the structure is a large water-filled tipping brick that enhances the water play experience. This attraction is fully accessible and allows wheelchair use throughout.



Restrictions

- No eating, drinking or smoking
- No flotation devices, umbrellas, cameras or loose items
- Swimwear with exposed zips or buckles are not permitted.
- No children on laps, one person per slide at any time.
- Do not drink the water
- A responsible person at least 16 years of age must supervise children under 6 years old, an adult can supervise up to four children.
- Swimwear must be worn at all times
- Only swimming nappies are permitted
- Eyeglasses must be securely fitted to riders with headstraps
- Only water shoes may be worn, no shoes are permitted to be worn in the wet area
- Each slide has specific accessibility rules. Please ask a waterpark attendant for more

information.

- Blue and yellow slides, guests must be a minimum 1.0m, there is a weight limit of 21 stone.
- Red and green slide, guests must be a minimum height of 90cm. Adults are not permitted to ride.
- This ride is not recommended for guests with; back & neck problems, heart conditions, high blood pressure, broken limbs or pregnant guests
- Wheelchair access is via the main entrance
- During extreme weather conditions such as thunder, lightning, and high winds, the attraction may be closed

Minifigure Speedway Bricktopia

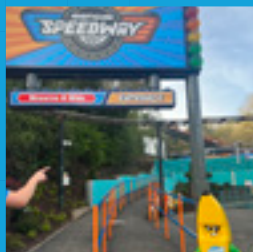
Queue Access: Ground level
Ride Transfer: Ground level

Step Free Ride Access

Ride Access Pass and wheelchair access are available via the Fastrack entrance, located to the left of the main entrance. Access to the ride is step free, with a dedicated merge point before joining the standard queue. A staff member will assign your party to either Team All Stars or Team Legends, and you will watch a video to meet your LEGO® Minifigure Captain before proceeding to the ride platform.

Wheelchairs and mobility aids can be brought to the loading platform via the exit, where a secure storage bay is located between the two ride carriages. Mobility aids can be positioned nearby for easier transfer, and guests must be able to transfer with or without assistance. All guests are secured by a lap bar.

The ride includes fast movement, including forward and backward motion, as well as sensory elements such as videos, music, and loud sound effects. At the end of the ride, lap bars automatically release, and guests exit via the central platform. A lift is available for those with mobility aids, and there is a step-free exit via a ramped pathway. There is a step to assist transferring in and out of the ride unit.



Restrictions

- No standing at anytime
- No umbrellas, cameras or loose items
- No eating, drinking or smoking
- No children on laps
- Shirts and shoes must be worn at all times
- Each row accommodates up to four guests
- Guests must be able to transfer in and out of the ride unit either on their own or with the assistance of their carer
- Guests under the height of 1.3m must be accompanied by a responsible person at least 16 years of age
- Guests are required to sit upright with or without the assistance of a guardian or carer

Step Free Ride Access

Ride Access Pass and wheelchair access is via the Fastrack entrance, located to the right of the main entrance. The train consists of carriages with rows that accommodate up to four guests per row. Guests must transfer into a carriage over a small gap between the train and platform, with or without assistance from a carer or guardian.

Wheelchair users can use a carriage at the back of the train, allowing them to remain in their wheelchair during the ride. A hinged seat can be raised, reducing capacity to one wheelchair user and two accompanying guests. There are no restraints; guests are secured by the carriage doors locking during the ride.

There are no additional sensory elements. At the end of the ride, the driver unlocks the carriage doors, and guests transfer out the same side they entered. Guests exit at the end of the platform where Ride Access Pass and wheelchair users boarded the train. Guests may get wet. Ride Access Pass and wheelchair access is through the Reserve & Ride entrance, located to the left of the main entrance. At the end of the ride, the driver unlocks the carriage doors, and guests transfer out the same side they entered. Guests exit at the exit gate at the end of the platform.



Restrictions

- No standing at anytime
- No umbrellas, cameras or loose items
- No eating, drinking or smoking
- No children on laps
- Shirts and shoes must be worn at all times
- Each row accommodates up to four guests
- Guests must be able to transfer in and out of the ride unit either on their own or with the assistance of their carer
- Guests under the height of 1.3m must be accompanied by a responsible person at least 16 years of age
- Guests are required to sit upright with or without the assistance of a guardian or carer

Autumn's Riding Adventure Heartlake City

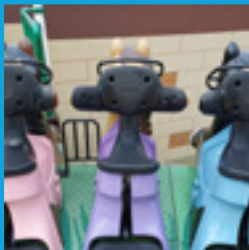
Queue Access: Lift
Ride Transfer: Lift or Stairs

Step Free Ride Access

Ride Access Pass users should use the Fastrack entrance, which has nine steps from the queue to the ride platform. The wheelchair entrance is to the left of the main entrance, with a lift available. Guests should speak to a ride attendant in the Reserve and Ride queue for assistance. The lift door can be unlocked using the call button on the panel.

The ride features individual horses on a metal disc. Guests transfer onto a raised platform through a green barrier, with one small step onto the ride. Wheelchairs and mobility aids can be brought to the entrance, but guests must transfer onto the ride unit with or without assistance. There are no additional sensory elements.

Guests are secured by a back restraint that rises from behind the horse. Those with a torso measurement over 51 inches may not be able to ride. Guests should hold the handles to brace against ride forces. At the end of the cycle, restraints automatically lift, and guests exit to the right of the disc, descending nine steps. Guests using the wheelchair lift can return to their mobility aids and exit via the lift.



Restrictions

- No standing at anytime, feet must remain on the disk at all times
- No umbrellas, cameras or loose items
- No eating, drinking or smoking
- Guests are required to hold on to handles/handrails, lap bars and brace against ride forces
- Guests must be secured in the seat, this may not be possible for those with chest measurements larger than 51 inches
- Shirts and shoes must be worn at all times
- Each seat accommodates one guest.
- Guests must be a minimum height of 1.2m to ride
- Guests must be able to transfer in and out of the ride unit either on their own or with the assistance of their carer
- Guests are required to hold themselves upright without assistance for the duration of the ride
- This ride is not recommended for guests with; back & neck problems, heart conditions, high blood pressure, broken limbs or pregnant guests

Laser Raiders

Kingdom of the Pharaohs

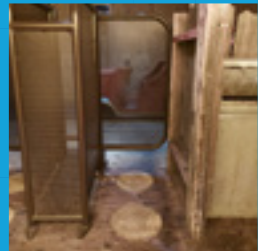
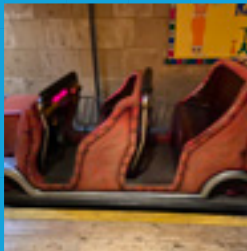
Queue Access: Ground level
Ride Transfer: Ground level

Step Free Ride Access

Ride Access Pass and wheelchair users enter via the Fastrack entrance, located to the right of the main queue. The step-free queue merges with the main line and crosses the LEGOLAND® Express track. Access to the ride is step free, with a wider entrance available on request.

Ride units are cars with two rows, seating two guests per row. Guests step into the stationary unit to transfer, and wheelchairs must be moved to a designated area during the ride. Guests are secured by lap bars and should hold on to brace against ride forces. The ride includes sensory elements such as darkness, flashing lights, and strobe effects, as well as interactive laser guns for scoring points by hitting targets.

At the end of the ride, lap bars automatically raise for transfer. Guests exit on the same side and follow the step-free pathway. Specialist cars are unlocked, and devices are provided to assist with transfers. Access to the ride is step free, with a wider entrance available on request due to two narrow ride platform entrance gates.



Restrictions

- No standing at anytime
- No umbrellas, cameras or loose items
- No eating, drinking or smoking
- No children on laps
- Guests are required to hold on to handles/handrails, lap bars and brace against ride forces
- Shirts and shoes must be worn at all times
- Each car accommodates up to four guests.
- Guests must be a minimum height of 90cm to ride
- Guests must be able to transfer in and out of the

ride unit either on their own or with the assistance of their carer

- Guests are required to hold themselves upright without assistance for the duration of the ride
- This ride is not recommended for guests with; back & neck problems, heart conditions, high blood pressure, broken limbs or pregnant guests

Scarab Bouncers

Kingdom of the Pharaohs

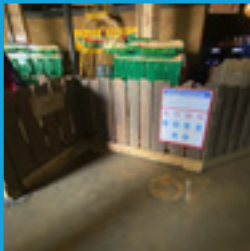
Queue Access: Ground level
Ride Transfer: Ground level

Step Free Ride Access

Ride Access Pass and wheelchair access are available via the ride exit, located to the right of the ride when viewed from inside the building. Access to the ride is step free. The two towers consist of individual seats. Guests must transfer into the raised seat with or without assistance from a guardian or carer. Wheelchairs can be brought into the ride area and positioned adjacent to the ride unit, then moved to a suitable location once the transfer is complete.

Wheelchairs can be brought into the ride area and positioned next to the ride unit, then moved to a suitable location for the duration of the ride cycle. Guests must be able to sit upright throughout the ride and brace against ride forces using the lap bar, including during lift-off and drop sections.

Guests are secured by a single lap bar that spans the entire ride unit. The lap bar is lowered by staff and remains in a fixed position. The ride requires guests to sit upright for the duration and to brace against ride forces using the lap bar. There are no additional sensory elements. At the end of the ride, the lap bar is unlocked and lifted, and guests exit the same way they entered, transferring down from the unit.



Restrictions

- No standing at anytime
- No umbrellas, cameras or loose items
- No eating, drinking or smoking
- No children on laps
- Guests are required to hold on to handles/handrails, lap bars and brace against ride forces
- Shirts and shoes must be worn at all times
- Guests must be a minimum height of 90cm to ride
- Guests must be able to transfer in and out of the ride unit either on their own or with the assistance

of their carer

- Guests are required to hold themselves upright without assistance for the duration of the ride
- This ride is not recommended for guests with; back & neck problems, heart conditions, high blood pressure, broken limbs or pregnant guests

Thunder Blazer

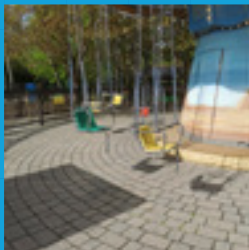
Kingdom of the Pharaohs

Queue Access: Ground level
Ride Transfer: Ground level

Step Free Ride Access

Ride Access Pass and wheelchair access are available via the Fastrack entrance, located to the left of the main entrance. Access to the ride is step free. The ride units are hanging seats. Guests must transfer into the suspended unit with or without assistance from a guardian or carer. Wheelchairs or mobility aids can be brought adjacent to the unit for transfer.

Guests are secured by a metal bar that sits above the waist and locks on a chain between the guests' legs. Guests should brace against ride forces. There are no additional sensory elements. At the end of the ride cycle, guests return to the same location. Lap bars can be unlocked by the guest or with assistance from a guardian or carer. Wheelchairs or mobility aids can return to the ride area to assist with exit. The exit is through a gate on the right and is step-free.



Restrictions

- No standing at anytime
- No umbrellas, cameras or loose items
- No eating, drinking or smoking
- No children on laps
- Each chair accommodates one guest
- Guests are required to hold on to handles/handrails, lap bars and brace against ride forces
- Shirts and shoes must be worn at all times
- Guests must be a minimum height of 90cm to ride
- Guests must be able to transfer in and out of the

ride unit either on their own or with the assistance of their carer

- Guests are required to hold themselves upright without assistance for the duration of the ride
- This ride is not recommended for guests with; back & neck problems, heart conditions, high blood pressure, broken limbs or pregnant guests

Desert Chase

Kingdom of the Pharaohs

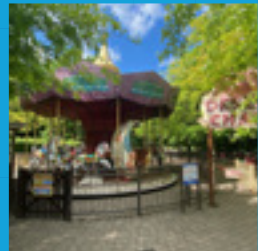
Queue Access: Ground level
Ride Transfer: Ground level

Step Free Ride Access

Ride Access Pass and wheelchair access are available via the exit, located to the left of the main entrance. There is no step-free access as the ride is on a raised platform, with one small step from the floor to the ride. Wheelchairs or mobility aids can be brought close to the chosen ride unit to assist with transfer.

Guests under 1.1 meters must have an adult standing next to them for the duration of the ride, or seated with them if in a spinning cup. Guests on horses are secured with seatbelts, which must be worn by everyone seated, including adults. The two types of horses move differently, so guests are advised to observe the ride before boarding. The spinning cup motion is guest controlled, and the shell may rock. There are no additional sensory elements.

At the end of the ride, guests transfer down from the platform, and wheelchairs or mobility aids can be returned to the ride area to assist with exit.



Restrictions

- No umbrellas, cameras or loose items
- No eating, drinking or smoking
- No children on laps
- Shirts and shoes must be worn at all times
- Maximum of one guest per horse
- Guests under the height of 1.1m must be accompanied by a responsible person at least 16 years of age
- Maximum four guests per teacup and rocking carriage
- Guests must be able to transfer in and out of the ride unit either on their own or with the assistance of their carer
- Guests are required to hold themselves upright without assistance for the duration of the ride
- There is no minimum height restriction

Aero Nomad

Kingdom of the Pharaohs

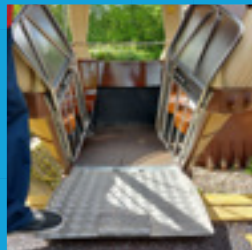
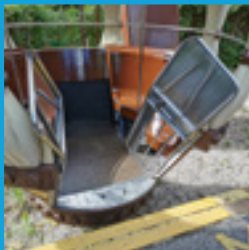
Queue Access: Ground level
Ride Transfer: Ground level

Step Free Ride Access

Ride Access Pass and wheelchair access are available via the exit, located to the right of the main entrance. Access to the ride is step free. The ride consists of eight gondolas attached to ferris wheel arms. Guests transfer into the units from the same level as the loading area, with or without assistance from a guardian or carer. There is a small gap between the platform and the units. The ride consists of eight gondolas, that can swing.

One gondola is wheelchair accessible, allowing guests to remain in their wheelchair for the duration of the ride. A metal ramp bridges the gap for transfer, and the wheelchair is positioned in the centre of the gondola. There are no restraints or additional sensory elements.

At the end of the ride, guests return to the same location, transfer out over the small gap with or without assistance, and exit left via the step-free path. Guests remaining in their wheelchair will have the ramp brought to assist with exit. Guests are secured by the doors at the front of each unit.



Restrictions

- No standing at anytime
- No umbrellas, cameras or loose items
- No eating, drinking or smoking
- No children on laps
- Shirts and shoes must be worn at all times
- Guests under the height of 1.3m must be accompanied by a responsible person at least 16 years of age
- Each gondola accommodates seven guests, maximum of five adults per gondola.
- There must be a minimum of two guests per

gondola.

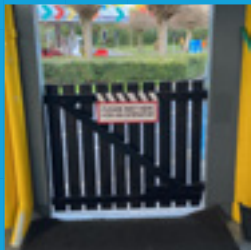
- Guests must be able to transfer in and out of the ride unit either on their own or with the assistance of their carer
- Guests are required to hold themselves upright without assistance for the duration of the ride
- This ride is not recommended for guests with; back & neck problems, heart conditions, high blood pressure, broken limbs or pregnant guests
- There is no minimum height restriction

Step Free Ride Access

Ride Access Pass & Wheelchair access is via the left-hand Fastrack entrance, with step-free access. The queue leads to a teaching area where guests learn to operate their car before entering the ride. Access involves 1 small step. Wheelchairs can be brought into the ride area but should be moved to a suitable location once guests transfer into the car. The ride features single-seated cars.

Guests must transfer with or without assistance, stepping or being lifted over the side of the car. Wheelchairs can be placed adjacent to the car to assist. Guests must sit upright without assistance for the ride duration. A seatbelt will be secured by a guardian or carer before the ride begins. If using a red Ride Access Pass, guardians do not need to ride with the guest.

LEGO City Driving School is self-controlled; guests use 2 pedals to start and stop the car. Staff are present on the track throughout the ride. At the end, guests exit via a small step and head to the photo booth area. Guardians can return to assist with exit and bring wheelchairs or mobility aids.



Restrictions

- No standing at anytime
- No umbrellas, cameras or loose items
- No eating, drinking or smoking
- No bumping of the cars
- Not suitable for guests over the age of 13 years old.
- Guests must be a minimum height of 1.1m to ride
- The maximum height for this ride is 1.5m
- Shirts and shoes must be worn at all times
- Each car accommodates one guest
- Guests must be able to transfer in and out of the

ride unit either on their own or with the assistance of their carer

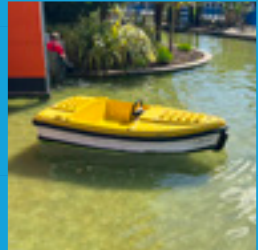
- Guests are required to hold themselves upright without assistance for the duration of the ride
- Guests are required to press the foot pedal and steer the car
- This ride is not recommended for guests with; back & neck problems, heart conditions, high blood pressure, broken limbs or pregnant guests

Step Free Ride Access

Ride Access Pass entrance is via the Fastrack entrance, using the right-hand queue. Wheelchair access is through the ride exit on the right. If the Reserve and Ride entrance is not in use, the ride exit should be used. The entrance is not step free, with 23 steps to the platform, and staff can provide alternative access if needed. There are no additional sensory elements on this ride.

The ride units are boats with a single bench seating up to three guests. Access is via three channels. Boats are stabilized during loading but may still rock. Wheelchairs are brought alongside the boat on the exit platform, and guests transfer into the boat with or without assistance. Wheelchairs or mobility aids are stored for the duration of the ride.

Guests may get wet. Coastguard HQ is an interactive, self-controlled ride where guests use a pedal and steering wheel to navigate. Staff are in the water to assist if needed. Upon returning, guests steer to the right channel for a step-free exit and transfer out of the boat once stabilized. Wheelchairs or mobility aids can then be returned to the platform. No restraints are used on this ride. There is no single rider available on this attraction.



Restrictions

- No standing at anytime
- No umbrellas, cameras or loose items
- No eating, drinking or smoking
- No bumping of the boats
- Guests under the height of 1.3m must be accompanied by a responsible person at least 16 years of age.
- Shirts and shoes must be worn at all times
- Each boat accommodates a minimum of two guests and a maximum of three guests, maximum of two adults.
- Guests must be able to transfer in and out of the ride unit either on their own or with the assistance of their carer
- No single riders
- Guests are required to hold themselves upright without assistance for the duration of the ride
- Guests are required to press the foot pedal and steer the boat
- This ride is not recommended for guests with; back & neck problems, heart conditions, high blood pressure, broken limbs or pregnant guests

Step Free Ride Access

Ride Access Pass & Wheelchair access is via the exit. There is a small step down from the exit to the ride area, and then a step up into the teaching area where guests receive instruction on driving. Wheelchairs can be taken into both the ride and teaching areas.

The ride units are single-seat cars. Guests must transfer into the car with or without assistance from a guardian or carer. This transfer involves stepping or being lifted over the side of the car. Wheelchairs or mobility aids can be brought into the ride area, but once the guest is in the car, the device should be moved to a suitable location for the duration of the ride. Guests are secured with a seatbelt across their waist.

There are no additional sensory elements. The ride is self-controlled, with guests using a single pedal to start their car. Staff are positioned around the course throughout the ride. At the end of the ride, cars come to a stop and guests proceed to the exit area. Guardians or carers may return to assist with exit and bring wheelchairs or mobility aids. There is one small step toward the exit.



Restrictions

- No standing at anytime
- No umbrellas, cameras or loose items
- No eating, drinking or smoking
- No bumping of the cars
- Guests must be a minimum height of 90cm to ride
- The maximum height for this ride is 1.1m
- Shirts and shoes must be worn at all times
- Each car accommodates one guest
- Guests must be able to transfer in and out of the ride unit either on their own or with the assistance of their carer
- Guests are required to hold themselves upright without assistance for the duration of the ride
- Guests are required to press the foot pedal and steer the car
- This ride is not recommended for guests with; back & neck problems, heart conditions, high blood pressure, broken limbs or pregnant guests

Step Free Ride Access

Ride Access Pass & wheelchair users enter via the Fastrack entrance, which is step-free.

The ride units are gondolas with two benches facing each other, accommodating up to four guests. The unit remains stationary during loading. Guests transfer up a small step into the gondola, with assistance from a carer if needed. Wheelchairs or mobility aids can be brought alongside the unit for easier transfer and then moved to a suitable location during the ride. Guests are secured by a metal lap bar that is locked in one fixed position.

Guests are secured by a metal lap bar that is locked by the unit door. During the ride, the gondolas elevate, and guests can raise them further by pulling a noise-making rope; releasing the rope lowers the gondola to its standard height. At the end of the ride cycle, the gondolas return to the ground, doors are unlocked by staff, and mobility aids can be retrieved before exiting to the right of the booth.



Restrictions

- No standing at anytime
- No umbrellas, cameras or loose items
- No eating, drinking or smoking
- No children on laps
- Shirts and shoes must be worn at all times
- Each gondola accommodates up to four guests
- Guests must be able to transfer in and out of the ride unit either on their own or with the assistance of their carer
- Guests under the height of 1.3m must be accompanied by a responsible person at least 16 years of age
- Guests are required to sit upright with or without the assistance of a guardian or carer
- There is no minimum height restriction

Step Free Ride Access

Ride Access Pass & Wheelchair access is via the Fastrack entrance, located opposite Balloon School and on the opposite side of the ride from the main entrance. Access to the pre-load area is step-free. Guests begin in a pre-load area behind automatic gates, assigned to their fire truck.

The ride units are fire trucks accommodating up to 4 guests, with a minimum of 2 guests and a maximum of 2 adults per unit. Guests begin in a pre-load area behind flush gates, assigned to their fire truck. Wheelchairs and mobility aids can be brought into the ride area to assist with boarding. Guests transfer into the ride units with or without assistance, after which mobility aids are stored in a suitable location for the duration of the ride.

At the end of the ride, guests exit the units and can retrieve their mobility aids, following the step-free exit pathway back to the main area.



Restrictions

- No umbrellas, cameras or loose items
- No eating, drinking or smoking
- No children on laps
- Guests must be a minimum height of 90cm to ride
- Shirts and shoes must be worn at all times
- Each truck accommodates four guests, minimum of two guests per vehicle to allow operation.
- Guests must be able to transfer in and out of the ride unit either on their own or with the assistance of their carer
- Guests under the height of 1.3m must be accompanied by a responsible person at least 16 years of age
- Guests are required to sit upright with or without the assistance of a guardian or carer
- This ride is not recommended for guests with; back & neck problems, heart conditions, high blood pressure, broken limbs or pregnant guests

LEGO City Deep Sea Adventure

LEGO® City

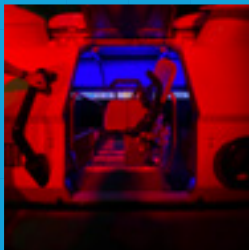
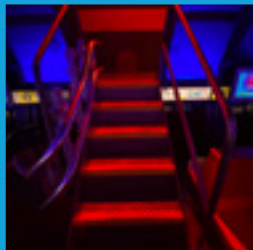
Queue Access: Ground level
Ride Transfer: Below ground

Step Free Ride Access

Ride Access Pass & Wheelchair access is via the Fastrack entrance. Access to the platform is step-free. The ride unit is a submarine with seating for up to 14 guests. Access involves 6 small steps, but one submarine is equipped with a built-in stair lift for non-ambulant guests. Guests using the stair lift can transfer into the chair at the boarding point, be lowered into the submarine with staff assistance, and remain in the lift for the entire ride.

Wheelchairs and larger mobility aids remain on the platform and are returned at the end of the ride. The ride is slow, with no significant forces, and guests are secured by a locked door. Guests must remain seated throughout and should be aware that the ride may not be suitable for those with claustrophobia. Guests can view the submarine before boarding to assess suitability.

At the end of the ride, the door opens automatically. Guests using the stair lift are assisted back to their wheelchairs, and the rest of the exit pathway is step-free.



Restrictions

- No standing at anytime
- No umbrellas, cameras or loose items
- No eating, drinking or smoking
- No flash photography
- Shirts and shoes must be worn at all times
- Each submarine accommodates fourteen guests, loading combinations apply
- Guests must be able to transfer in and out of the ride unit either on their own or with the assistance of their carer
- Guests under the height of 1.2m must be accompanied by a responsible person at least 16 years of age
- Guests are required to sit upright with or without the assistance of a guardian or carer
- There is no minimum height restriction

Haunted House Monster Party LEGO® City

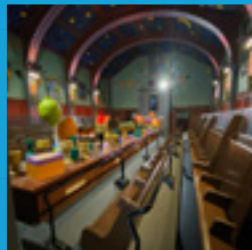
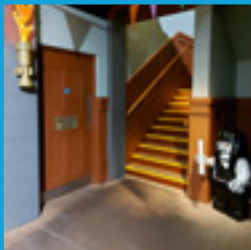
Queue Access: Lift
Ride Transfer: Lift or Stairs

Step Free Ride Access

Ride Access Pass & Wheelchair access is via the Fastrack entrance. Guests are batched into a lane before entering the ride building. Access to the ride is via stairs (20 steps) or a wheelchair lift. The lift is located through a second set of doors to the left of the stairs; guests should speak to staff for assistance. Note: the lift has a 400kg weight limit, and mobility scooters are not permitted. Guests should follow the instructions above the lift call button.

After the lift, guests enter a pre-show area where staff will assist as needed. Guests are restrained by an automatic lap bar and must be able to sit upright without assistance. The ride features multiple sensory elements, including flashing and strobe lighting, and may not be suitable for those with motion sickness.

At the end of the ride, lap bars release. Guests using the stairs exit on the opposite side of the ride, while guests who used the lift remain seated until others have unloaded, then return via the lift with their mobility aids.



Restrictions

- No standing at anytime
- No umbrellas, cameras or loose items
- No eating, drinking or smoking
- No children on laps
- Guests must be a minimum height of 90cm to ride
- Shirts and shoes must be worn at all times
- There must be an adult seated at the end of each row. This ride seats 76 guests. each bench accomodated up to 4 guests with 38 guests each side of the gondola
- Guests must be able to transfer in and out of the

ride unit either on their own or with the assistance of their carer

- Guests are required to hold on to handles/ handrails, lap bars and brace against ride forces
- Guests under the height of 1.2m must be accompanied by a responsible person at least 16 years of age
- Guests are required to sit upright with or without the assistance of a guardian or carer
- This ride is not recommended for guests with; back & neck problems, heart conditions, high blood pressure, broken limbs or pregnant guests

Step Free Ride Access

Ride Access Pass & Wheelchair Access is via the entrance under the main archway on the right-hand side. There is no step-free access, and wheelchairs must be left at the top of the ramp. Access to the ride involves a walkway and 15 steps to the platform. Ride Access Pass and wheelchair access is through the Ride Access Pass entrance under the main archway on the right-hand side.

The ride unit is a standing pod with handrails and a steering wheel, accommodating up to 2 guests (maximum 1 adult per pod). Guests must transfer into the pod with or without assistance. A metal bridge lowers when the ride is stationary, and there is a small step down into the pod. Wheelchairs cannot be brought onto the platform.

Guests must be able to stand for the duration of the ride and brace against ride forces. There are no restraints, but a safety bar is lowered once inside the pod. The ride is passenger-controlled via a steering wheel to adjust speed. At the end of the ride, the ramp will lower, and guests exit via the 15 steps to the exit platform.



Restrictions

- No umbrellas, cameras or loose items
- No eating, drinking or smoking
- No children on laps
- Guest must remain standing at all times
- Guests must be a minimum height of 1.0m to ride
- Shirts and shoes must be worn at all times
- Each pod accommodates a maximum of two guests, maximum of one adult per pod.
- Guests must be able to transfer in and out of the ride unit either on their own or with the assistance of their carer
- Guests are required to hold on to handles/handrails, lap bars and brace against ride forces
- Guests under the height of 1.3m must be accompanied by a responsible person at least 16 years of age
- Adults must ride behind children in the pod
- This ride is not recommended for guests with; back & neck problems, heart conditions, high blood pressure, broken limbs or pregnant guests

Fire and Ice Freefall LEGO® MYTHICA

Queue Access: Ground level
Ride Transfer: Ground level

Step Free Ride Access

Ride Access Pass & Wheelchair Access is via the step-free exit on the left of the attraction. The ride unit is a ground-level seat with no steps required. Guests may bring wheelchairs to the boarding point but must transfer into the seat with or without assistance from a carer. Wheelchairs must be stored away from the ride area for the duration of the ride.

Guests are secured by a lap bar pulled down from above, which locks at a fixed point and may not accommodate larger guests. Riders must sit upright and brace against ride forces independently. There are no sensory elements or interactive controls. It is recommended to view the ride in motion beforehand to assess suitability. Guests must sit upright and brace against ride forces independently. This includes lifting off the ground and drops.

At the end of the ride, restraints automatically unlock. Guests exit to the left side of the booth, retrieve their mobility aids, and follow the step-free exit pathway.



Restrictions

- No standing at anytime
- No umbrellas, cameras or loose items
- No eating, drinking or smoking
- No children on laps
- Guests must be a minimum height of 1.0m to ride
- Shirts and shoes must be worn at all times
- Each seat accommodates one guest
- Guests must be able to transfer in and out of the ride unit either on their own or with the assistance of their carer
- Guests are required to hold on to handles/handrails, lap bars and brace against ride forces
- Guests under the height of 1.2m must be accompanied by a responsible person at least 16 years of age
- Guests are required to sit upright with or without the assistance of a guardian or carer
- This ride is not recommended for guests with; back & neck problems, heart conditions, high blood pressure, broken limbs or pregnant guests

Flight of the Sky Lion LEGO® MYTHICA

Queue Access: Ground level
Ride Transfer: Ground level

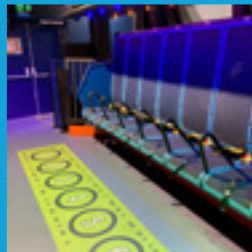
Step Free Ride Access

Ride Access Pass & Wheelchair access is via the right-hand Fastrack entrance. Wheelchair users are directed to step-free ground-floor seating. The ride unit has a seat with a retractable seatbelt; there is no step up or down. Guardians or carers can assist with transfers if needed.

Wheelchairs can be brought to the boarding point and stored in a designated bay with the help of a ride host. If the bay is full or multiple wheelchairs are in use, extra wheelchairs can be stored outside the exit doors and retrieved after the ride.

Guests are secured with seatbelt restraints and handrails. The ride includes multiple sensory elements, such as loud music, strobe/flashing lights, and motion simulation, and may not be suitable for guests with motion sickness or sensory sensitivities.

At the end of the ride, guests release their seatbelt by pressing a button. Exit is via a door opposite the entrance, which is step-free, and wheelchairs can be brought back into the ride area to assist with exit.



Restrictions

- No standing at anytime
- No umbrellas, cameras or loose items
- No eating, drinking or smoking
- No children on laps
- Guests must be a minimum height of 1.0m to ride
- Shirts and shoes must be worn at all times
- Each gondola accommodates up to 12 guests, loading combinations apply. Maximum of one guest per seat.
- Guests must be able to transfer in and out of the ride unit either on their own or with the assistance of their carer
- Guests are required to hold on to handles/handrails, lap bars and brace against ride forces
- Guests under the height of 1.2m must be accompanied by a responsible person at least 16 years of age
- Guests are required to sit upright with or without the assistance of a guardian or carer
- This ride is not recommended for guests with; back & neck problems, heart conditions, high blood pressure, broken limbs or pregnant guests

The Magical Forest LEGO® MYTHICA

Queue Access: Ground level
Ride Transfer: Ground level

Step Free Ride Access

This is a walk-through experience featuring LEGO® MYTHICA models and is fully accessible for wheelchairs and mobility scooters. There is a single entrance for all guests, so no Ride Access Pass is needed.

Sensory elements include loud noises in the tunnel, strobe lighting, mist, and sound effects from the LEGO® models. The attraction is not quiet, as it serves as the tunnel into the Magical Forest. Pathways are narrow but can accommodate standard wheelchairs and mobility scooters, with flat ground throughout.

Guests can touch and interact with LEGO MYTHICA character models, some of which include interactive elements accessible via a phone. A small hump bridge is present but remains accessible for wheelchairs and mobility scooters.



Restrictions

- No eating, drinking or smoking
- No running
- No climbing or standing outside of undesignated areas
- Shirts and shoes must be worn at all times
- Children must be supervised at all times by a responsible adult at least 16 years of age
- There is no minimum height restriction

LEGO® NINJAGO® The Ride

LEGO NINJAGO World

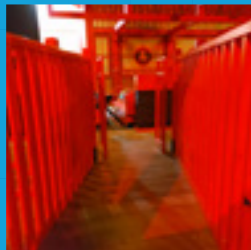
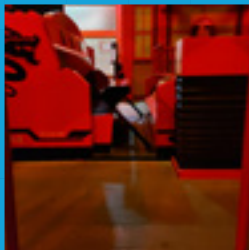
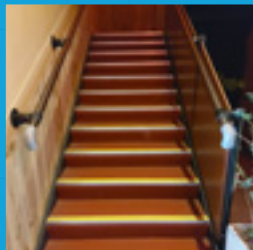
Queue Access: Lift
Ride Transfer: Lift or Stairs

Step Free Ride Access

Ride Access Pass entrance is via the Fastrack entrance on the left, involving 24 steps to the ride platform. Alternatively, guests can use the wheelchair lift at the LEGO® NINJAGO® Store to the left of the main entrance, which leads to the wheelchair entrance that merges with the Reserve & Ride line.

The ride features multiple sensory elements, including flashing and strobe lighting, and may not be suitable for guests who experience motion sickness. It is an interactive attraction, with guests using their hands to activate sensors. Once in the relevant queue line, please follow it to the merge point, where you will join the main queue for the ride.

Guests enter a training room, receive 3D glasses, and are assigned a row. Those needing assistance or with mobility aids are placed in the back row. Wheelchairs can be stored near the ride unit to aid transfer. The ride is interactive, with guests using their hands to activate sensors. After the ride, guests exit via 49 steps or, if unable, retrieve mobility aids and use the lift to exit to the shop.



Restrictions

- No standing at anytime
- No umbrellas, cameras or loose items
- No eating, drinking or smoking
- No children on laps
- Shirts and shoes must be worn at all times
- Each row accommodates a maximum of four guests
- Guests must be able to transfer in and out of the ride unit either on their own or with the assistance of their carer
- Guests are required to hold on to handles/handrails, lap bars and brace against ride forces
- Guests under the height of 1.2m must be accompanied by a responsible person at least 16 years of age
- Guests are required to sit upright with or without the assistance of a guardian or carer
- This ride is not recommended for guests with; back & neck problems, heart conditions, high blood pressure, broken limbs or pregnant guests

Step Free Ride Access

Ride Access Pass & Wheelchair Access is via the ride exit to the left of the ride and right of Cole's Rock Climb. Access is step-free. The ride unit has 6 rows, seating up to 4 guests per row, with a maximum of 8 adults per boat. Guests transfer up 2 steps through a narrow entrance, with or without assistance.

Wheelchairs or mobility aids can be brought adjacent to the ride unit to assist transfer, then stored in a suitable location for the ride duration. Guests are secured by a metal lap bar per row, lowered and locked by a staff member, and must brace against ride forces. Each row has a magnetic door secured by a ride attendant.

There are no additional sensory elements, and the ride is not suitable for those prone to motion sickness. At the end, lap bars are unlocked, devices returned, and guests exit the same way they entered.



Restrictions

- No standing at anytime
- No umbrellas, cameras or loose items
- No eating, drinking or smoking
- No children on laps
- Shirts and shoes must be worn at all times
- Guests must be a minimum height of 90cm to ride
- Each row accommodates a maximum of four guests. Maximum of eight adults per ride
- Guests must be able to transfer in and out of the ride unit either on their own or with the assistance of their carer
- Guests are required to hold on to handles/handrills, lap bars and brace against ride forces
- Guests under the height of 1.3m must be accompanied by a responsible person at least 16 years of age
- Guests are required to sit upright with or without the assistance of a guardian or carer
- This ride is not recommended for guests with; back & neck problems, heart conditions, high blood pressure, broken limbs or pregnant guests

Pirate Falls: Treasure Quest

Pirate Shores

Queue Access: Ground level
Ride Transfer: Below ground

Step Free Ride Access

Please enter the Fastrack entrance and follow it until the merge point, where you will join the main queue line for the ride. A ride attendant will direct guests to a boat. Entry is via a moving turntable, which cannot be stopped, so transfer must happen within 30 seconds. Each boat holds up to 5 guests; single riders may share. Guests may get wet, and the step down into the boat is 60cm.

Wheelchairs cannot be brought onto the turntable, but other mobility aids are allowed. Guests must transfer with or without assistance. There are no restraints; guests should remain seated, keep hands and arms inside, and hold the handrails. At the end, the boat returns to the turntable; guests take 1 small step up to exit within 30 seconds and follow the step-free exit pathway. There is no single rider available on this attraction.



Restrictions

- No standing at anytime
- No umbrellas, cameras or loose items
- No eating, drinking or smoking
- No children on laps
- No adults to ride in front of children in the boat
- Shirts and shoes must be worn at all times
- Guests must be a minimum height of 1.0m to ride
- Each boat accommodates a maximum of five guests and a minimum of two guests
- Guests must be able to transfer in and out of the ride unit either on their own or with the assistance of their carer
- Guests are required to hold on to handles/handrails, lap bars and brace against ride forces
- Guests under the height of 1.3m must be accompanied by a responsible person at least 16 years of age
- Guests are required to sit upright with or without the assistance of a guardian or carer
- This ride is not recommended for guests with; back & neck problems, heart conditions, high bloodpressure, broken limbs or pregnant guests
- Due to a moving turntable, guests must be able to board and exit in 30 seconds as this cannot be stopped

Jolly Rocker Pirate Shores

Queue Access: Ground level
Ride Transfer: Above ground

Step Free Ride Access

Ride Access Pass & Wheelchair access is via the Fastrack entrance to the left of the main entrance. The ride is step-free, with narrow pathways between units. Wheelchair or mobility aid users are assigned a unit near the entrance.

The ride units are round logs seating up to 6 guests. Guests transfer over a small step with or without assistance. Wheelchairs and mobility aids can be brought to the unit to assist with transfer but must be stored during the ride. There are no restraints; guests are secured by locking doors and hold the central handrail.

The log spins, controlled by the guest via the handrail. Forces are intense and may not suit those with motion sickness. At the end, attendants guide guests to unlock doors and exit. A small step is required, but the exit path is step-free.



Restrictions

- No standing at anytime
- No umbrellas, cameras or loose items
- No eating, drinking or smoking
- No children on laps
- Shirts and shoes must be worn at all times
- Guests must be a minimum height of 1.0m to ride
- Guests must be able to transfer in and out of the ride unit either on their own or with the assistance of their carer
- Guests are required to hold on to handles/handrails, lap bars and brace against ride

forces

- Guests under the height of 1.3m must be accompanied by a responsible person at least 16 years of age
- Guests are required to sit upright with or without the assistance of a guardian or carer
- This ride is not recommended for guests with; back & neck problems, heart conditions, high blood pressure, broken limbs or pregnant guests

Spinning Spider

Pirate Shores

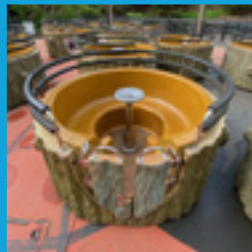
Queue Access: Ground level
Ride Transfer: Above ground

Step Free Ride Access

The Ride Access Pass & Wheelchair access is via the Fastrack entrance to the left of the main entrance. The ride is step-free, with narrow pathways between units. Guests with wheelchairs or mobility aids are assigned a unit near the entrance.

The ride units are round logs seating up to 6 guests. Guests transfer over a small step, with or without assistance. Wheelchairs and mobility aids can be brought to the unit area to assist with transfer but must be stored once transferred. There are no restraints; guests are secured by locking doors and must hold the central handrail.

The unit spins, controlled by guests via the handrail. The ride's forces are intense and may not suit those prone to motion sickness. At the end, attendants guide guests to unlock doors and exit. A small step is required, but the exit pathway is step-free.



Restrictions

- No standing at anytime
- No umbrellas, cameras or loose items
- No eating, drinking or smoking
- No children on laps
- Shirts and shoes must be worn at all times
- Guests must be a minimum height of 90cm to ride
- Each log accommodates a maximum of six guests
- Guests must be able to transfer in and out of the ride unit either on their own or with the assistance of their carer
- Guests are required to hold on to

handles/handrails, lap bars and brace against ride forces

- Guests under the height of 1.3m must be accompanied by a responsible person at least 16 years of age
- Guests are required to sit upright with or without the assistance of a guardian or carer
- This ride is not recommended for guests with; back & neck problems, heart conditions, high blood pressure, broken limbs or pregnant guests

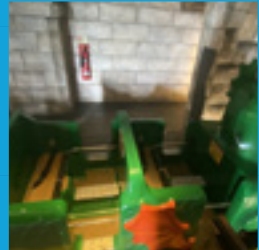
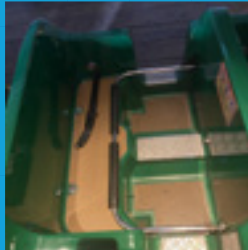
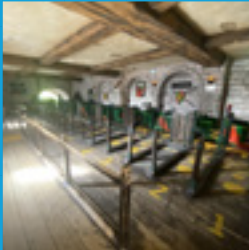
The Dragon Knights Kingdom

Queue Access: Lift
Ride Transfer: Lift or Stairs

Step Free Ride Access

The Dragon wheelchair access is via a lift to the right of the main entrance, which takes guests to platform level. Exit the lift, turn right, and merge with the main queue, where a ride attendant will assign a row. The Ride Access Pass entrance is through the Fastrack entrance on the left, with 28 steps to the platform.

Guests can bring mobility aids to the row entrance but must transfer into the ride unit with or without assistance; mobility aids are stored during the ride. Children under 1.3m must sit on the left side and wear a seatbelt in addition to the lap bar. The ride features sensory elements such as flashing lights and a dark section. At the end, lap bars unlock, and guests exit via the 28 steps or return to the lift to retrieve mobility aids.



Restrictions

- No standing at anytime
- No umbrellas, cameras or loose items
- No eating, drinking or smoking
- No children on laps
- Shirts and shoes must be worn at all times
- Guests must be a minimum height of 1.0m to ride
- Each unit accommodates a maximum of two guests. Children must sit on the left hand side
- Guests must be able to transfer in and out of the ride unit either on their own or with the assistance of their carer
- Guests are required to hold on to handles/handrills, lap bars and brace against ride forces
- Guests under the height of 1.3m must be accompanied by a responsible person at least 16 years of age
- Guests are required to sit upright with or without the assistance of a guardian or carer
- This ride is not recommended for guests with; back & neck problems, heart conditions, high blood pressure, broken limbs or pregnant guests

Dragon's Apprentice Knights Kingdom

Queue Access: Ground level
Ride Transfer: Ground level

Step Free Ride Access

Ride Access Pass & Wheelchair Access is via the Fastrack entrance. Access takes guests over a narrow bridge to the platform. Guests are required to transfer into the ride unit with or without assistance of a guardian or carer.

Wheelchairs and mobility aids can be taken to the ride unit to assist with transfer but then must be stored in a suitable location for the duration of the ride. The ride attendant can assist with this. Children must sit on the left hand side of the ride unit. Guests under 1.3 metres must be accompanied by an adult over the age of 16. Guests are secured by a lap bar which will be lowered and locked for the duration of the ride. There are no additional sensory elements to this ride. Once the ride has come to a complete stop, lap bars will be unlocked and lifted.

Guests can exit to the right side of the unit and follow the pathway to the exit. The exit pathway is step free. If guests have a wheelchair or mobility aid, they will exit on the same side they entered, retrieve their devices and exit back via the bridge.



Restrictions

- No standing at anytime
- No umbrellas, cameras or loose items
- No eating, drinking or smoking
- No children on laps
- Shirts and shoes must be worn at all times
- Guests must be a minimum height of 90cm to ride
- Each train accommodates a maximum of six adults, maximum of two guests per row. Children must sit on the right hand side.
- Guests must be able to transfer in and out of the ride unit either on their own or with the assistance of their carer
- Guests are required to hold on to handles/handrills, lap bars and brace against ride forces
- Guests under the height of 1.3m must be accompanied by a responsible person at least 16 years of age
- Guests are required to sit upright with or without the assistance of a guardian or carer
- This ride is not recommended for guests with; back & neck problems, heart conditions, high blood pressure, broken limbs or pregnant guests

Merlin's Challenge Knights Kingdom

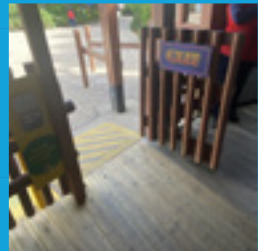
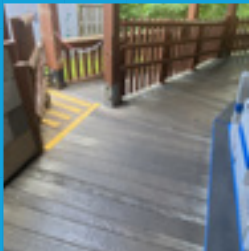
Queue Access: Ground level
Ride Transfer: Ground level

Step Free Ride Access

Ride Access Pass and wheelchair access are via the ride exit. Guests can bring mobility aids to the unit and transfer with or without assistance from a guardian or carer. Once transferred, mobility aids must be moved to a suitable location. Please note that while the ride has step-free access, the platform surface is uneven.

The ride units are small carts seating a maximum of two guests, with only one adult per unit, who must sit on the left-hand side. Guests must sit upright without assistance for the duration of the ride, hold onto the lap bar, and brace against ride forces. There are no additional sensory elements. Guests are secured by individual lap bars, which are manually lowered and locked before the ride begins.

At the end of the ride, lap bars are unlocked for guests to raise and exit toward the platform. Guests then follow the step-free path to the exit.



Restrictions

- No standing at anytime
- No umbrellas, cameras or loose items
- No eating, drinking or smoking
- No children on laps
- Shirts and shoes must be worn at all times
- Guests must be a minimum height of 90cm to ride
- Each unit accommodates a maximum of two guests, maximum of one adult per row. Adults must sit on the left hand side.
- Guests must be able to transfer in and out of the ride unit either on their own or with the assistance of their carer
- Guests are required to hold on to handles/handrails, lap bars and brace against ride forces
- Guests under the height of 1.3m must be accompanied by a responsible person at least 16 years of age
- Guests are required to sit upright with or without the assistance of a guardian or carer
- This ride is not recommended for guests with; back & neck problems, heart conditions, high blood pressure, broken limbs or pregnant guests